



# QVscribe

## Customizing Your **Configurations**



# Introduction

---

QVscribe performs a requirement analysis across 16 Problem Types based on the INCOSE guide and requirement best practices.

As a Configuration Author, you can now customize requirement analysis feedback based on the Problem Types you find most helpful, by toggling Problem Types on and off. This will provide you with greater control over the Problem Types that are most important to your team and most relevant to the requirements under review. This document outlines 4 ways you can utilize this feature to better customize QVscribe to fit within your company, department, and personal workflow.

# Ensure Your Team Get The Most Relevant Requirement Analysis

You can now toggle on and off all Problem Types including Quality Warning Problem Types. We understand that even Quality Warnings that are not affecting the score of your requirements or the document can still create some confusion and prolong discussions when they are flagged, especially when these Problem Types or issues are irrelevant to the type of review you are completing. Having the ability to toggle on and off Problem Types that are irrelevant to you and your team ensures that you can tailor QVscribe to your specific industry, company or departmental reviews.

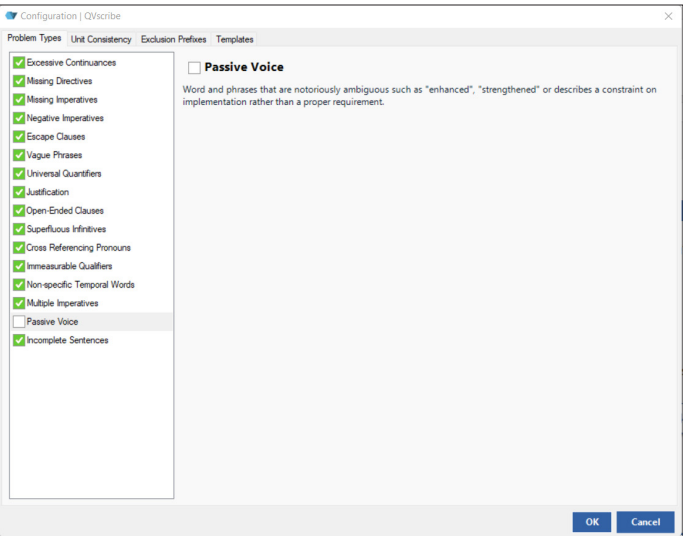
## Example:

If Passive Voice is not an issue during a specific review meeting or process, you can simply turn it off.

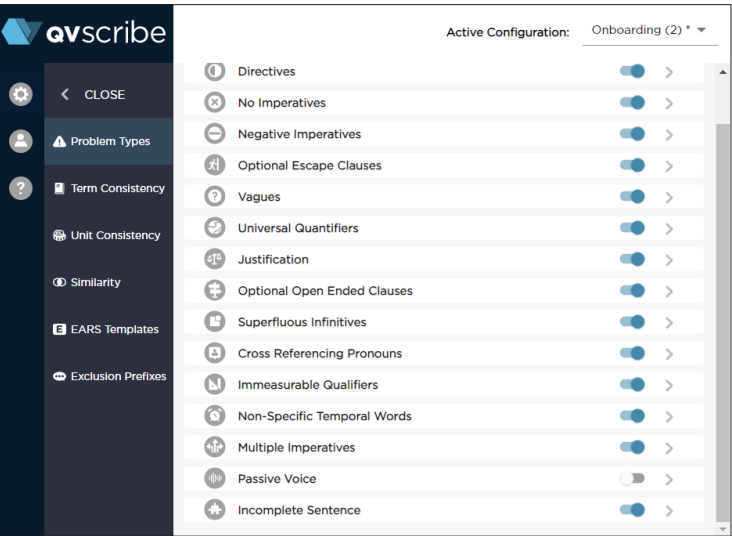
Your team is updating one section of a legacy document that is mostly written in passive voice and has decided they will not be changing this section to active voice at this time. Although the Quality Warnings do not affect the score, flagging this as an issue may prolong the review process.

You can simply turn this Problem Type off and it will not be flagged for this analysis.

### QVscribe for Word and Excel:



### QVscribe for DOORS Next, Jama and Polarion:



You can confidently bring your QVscribe PDF Report knowing the only issues highlighted are relevant to your review meeting.

# Unlock New Ways To Leverage QVscribe

You can look at documents through different lenses. This is beneficial for different user perspectives based on your role and/or area of expertise and different levels of Review/Checks.

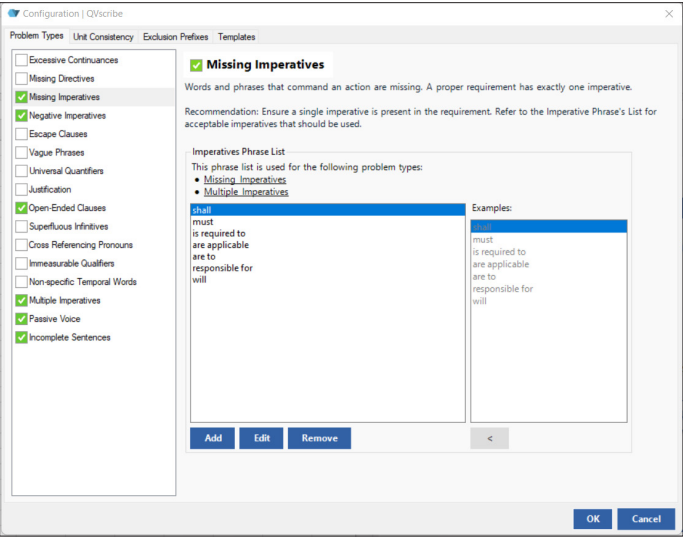
### Example:

Reviewing from the level of Completeness. The level in which your requirements are complete.

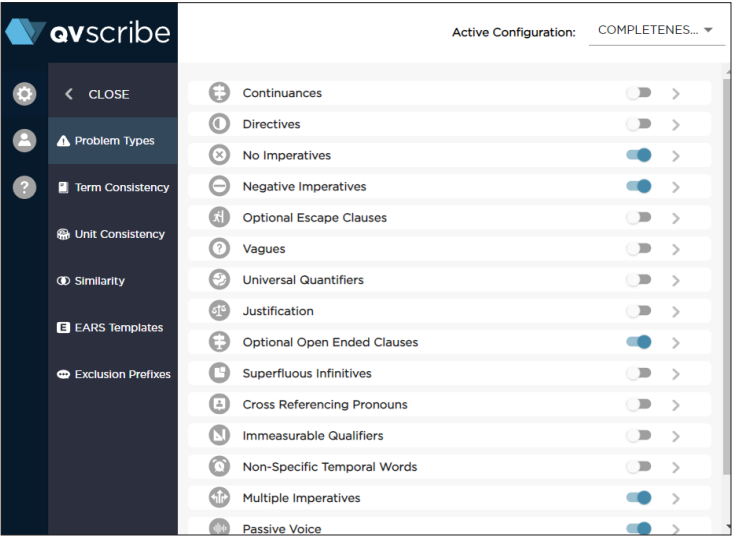
### Steps Taken:

- 1. A configuration called COMPLETE is created in the QVscribe Configurations. All Problem Type categories are toggled off, except **Missing/No Imperatives, Negative Imperatives, Incomplete Sentences, Optional Open-Ended Clauses** and **Passive Voice**.

QVscribe for Word and Excel:



QVscribe for DOORS Next, Jama and Polarion:



- 2. Save your new configuration. This configuration was named COMPLETENESS.

- 3. The document is run using the COMPLETE configuration as a means to review from a lens of the completeness of the document. Completeness in this case means the state of having all the necessary content for a complete requirement.

**Note:** You can then do an analysis, separately, for each level you created.

### Example Of Review Levels Configurations:

- **OVERALL:** All Problem Type categories are toggled on.
- **COMPLETE:** All Problem Type categories are toggled off except **Missing/No Imperatives, Negative Imperatives, Incomplete Sentences, Optional Open-Ended Clauses** and **Passive Voice**
- **UNAMBIGUOUS:** All Problem Type categories are toggled off, except **Optional Open-Ended Clauses, Superfluous Infinitives, Non-specific Temporal Word, Immeasurable Qualifiers** and **Passive Voice**
- **VERIFIABLE:** All Problem Type categories are toggled off, except **Vagues, Cross-Referencing Pronouns, and Universal Quantifiers**

# Focus Your Review Based On Your Project Stage

You can now adjust and change your QVscribe configurations based on the maturity of your projects. Customize the level of analysis to best fit your needs at any time. You may want a more lenient analysis when a project is at the very early stages, and a progressively more stringent analysis as the project moves towards the next stage of development (e.g. implementation design).

You can group your configurations based on the project stage.

*Example Stages: Initiation, Planning, Implementation and Closure*

## Example:

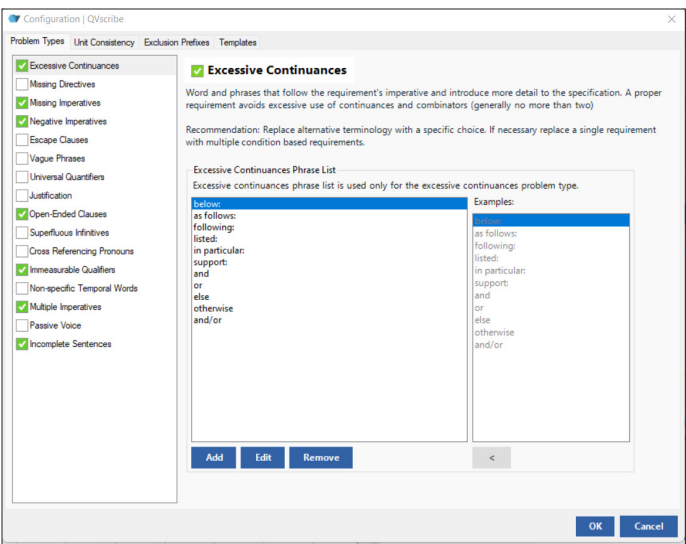
Reviewing for the Project Stage: Planning

At this stage, it is important to ensure that your requirements can be checked to be accurate and testable.

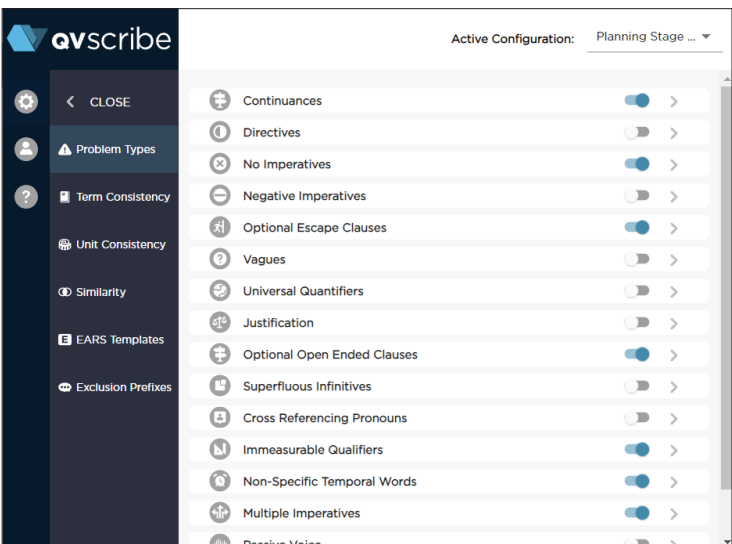
## Steps Taken:

1. A configuration called Planning Stage is created in the QVscribe Configurations. All Problem Type categories are toggled off, except **Missing Imperatives/No Imperatives, Multiple Imperatives, Incomplete Sentences, Optional Open-Ended Clauses, Excessive Continuances** and **Immeasurable Qualifiers**.

### QVscribe for Word and Excel:



### QVscribe for DOORS Next, Jama and Polarion:



2. A configuration named Planning Stage is created in the QVscribe Configurations.
3. The document is analyzed using the Planning Stage configuration.

You can use these Project Stage configurations as a gate. For the requirements to move to the next stage, they must pass this analysis.



# Quickly Analyze Any Type Of Document

You now have the ability to review documents to see what risks and ambiguity are present regardless of document format. Analyze paragraphs and pages of content without worrying about flags for imperatives or excessive continuances.

This feature makes it easy to review documents from co-workers, subordinates, customers, and vendors. This provides a quick way to ingest documents and see where there are possible areas of risk.

This can be used for documents that are not fully requirements documents or for a rapid way to analyze the whole document for a quick insight into possible problems before marking and organizing requirements. This can also be applicable for documents that you do not have the ability to change or edit in order to fit the format style for requirements best practices.

## Example:

Find possible risks in a customer document quickly.

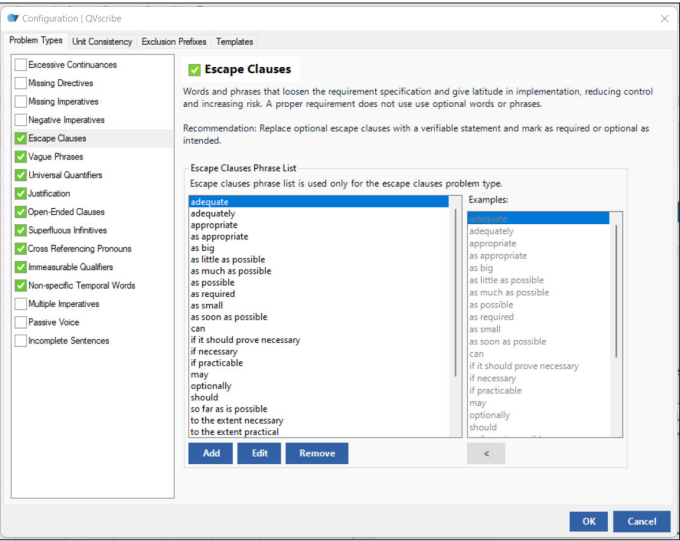
You received an RFP from a customer or vendor, and you would like to use QVscribe to check for any possible ambiguity, or risks.

However, the document is not written using requirements best practices and is written in paragraph format and/or without requirement identifier numbers so it is not clear where the requirements are in the document.

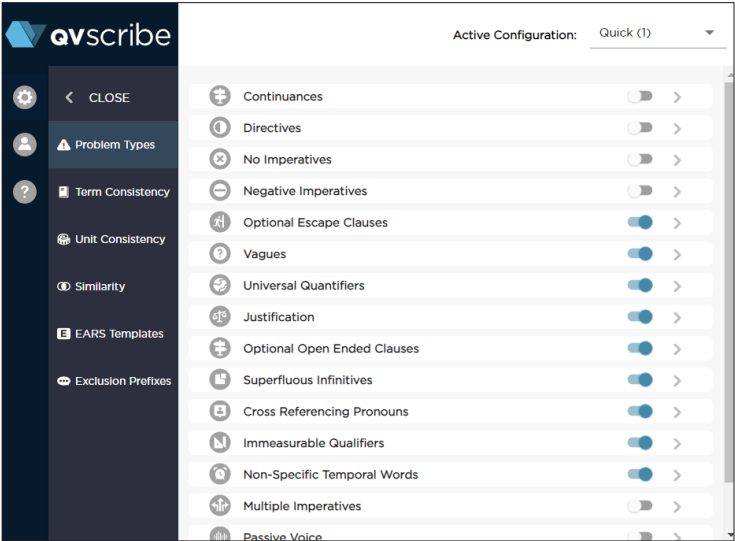
You create a configuration that will only look for the Problem Types that are important at this point in the RFP process.

You toggle off all Problem Types except **Optional Escape Clauses, Vague Phrases, Universal Quantifiers, Justification, Optional Open-Ended Clauses, Superfluous Infinitives, Cross Referencing Pronouns, Immeasurable Qualifiers, and Non-specific Temporal Words.**

QVscribe for Word and Excel:



QVscribe for DOORS Next, Jama and Polarion:



You can now search the document for issue words that may be areas of risks or require further clarification from your customer or vendor.