



## Welcome to our Latest Release, 4.0!

### Configurations Have Gotten More Customizable

This quarter the QRA team is happy to deliver one of the most requested developments. This release will give you greater control over which issues you want to report and which you want to ignore. You can save these preferences and use them according to project needs.

We have also renamed 'Trigger Words' to 'Problem Types'. Now each quality issue and warning are a Problem Type you can choose to detect. In turn, each Problem Type has an associated and user-configurable list of words and phrases.

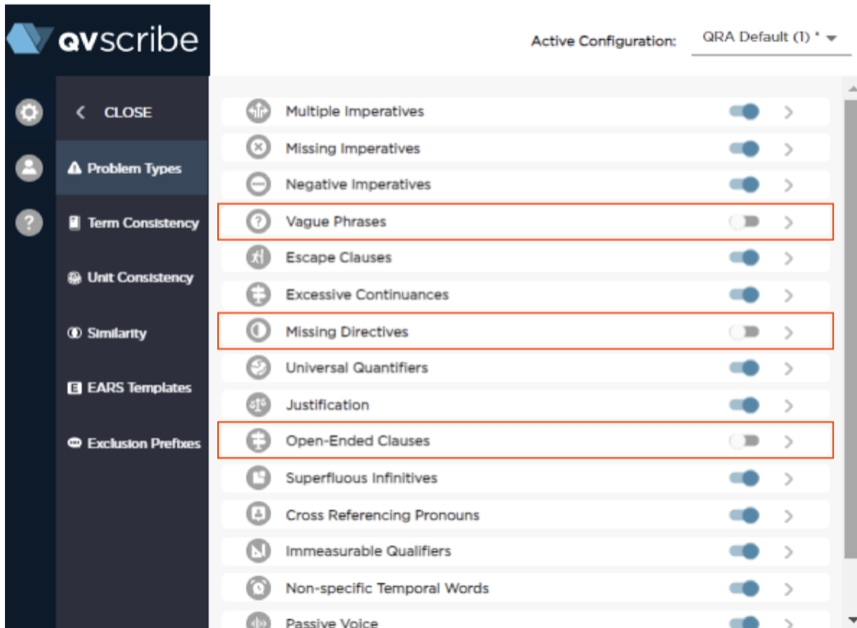
This latest release for QVscribe includes the most up-to-date version of the log4j library, 2.17.1, providing the securest version of this library.

We continuously strive to provide the securest product available to our clients and would like to thank the IT teams who reached out to support the implementation of the most recent log4j library in their QVscribe platform.

Now, let's get into specifics for those of you who use QVscribe for Polarion, JAMA, and DOORS Next integrations and those that use our Microsoft Word and Excel integrations, since there are some subtle differences.

# Polarion, Jama, DOORS Next Generation

This release will give you the ability to enable/disable problem types for your QVscribe configuration.



Requirements are now evaluated based on problem types that have been disabled. The QVscribe report and Quality Breakdown will now show N/A for disabled problem types.

Quality Score Breakdown		
QUALITY ISSUES	*PERCENTAGE	# FOUND
Cross-Referencing Pronouns	4%	1
Excessive Continuances	0%	0
Immeasurable Quantification	21%	5
Multiple Imperatives	0%	0
Negative Imperatives	4%	1
No Directives	N/A	N/A
No Imperatives	17%	4
Non-specific Temporal Word	8%	2
Optional Escape Clauses	4%	1
Optional Open-Ended Clauses	N/A	N/A
Superfluous Infinitives	21%	5
Vague Words	N/A	N/A

Total # of Requirements  
24

Score Summary ● Score Breakdown

The Authoring screen will only provide feedback for enabled problem types.

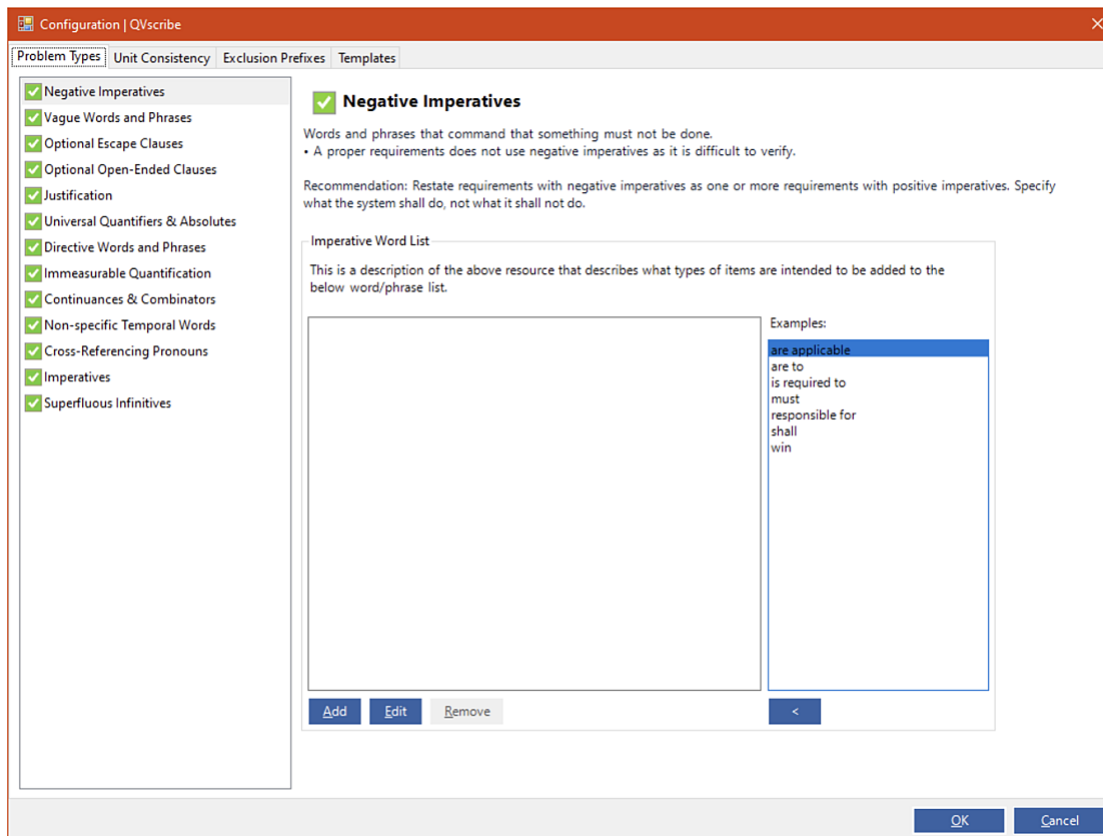
The screenshot shows the QVscribe interface. On the left, a requirement text is displayed: "The system will have indicator lights for when the system is activated, engaged, as well as the status of the cruise control." The word "activated" is underlined in red. On the right, a list of quality issues is shown, including "QUALITY WARNING : PASSIVE VOICE" and "QUALITY SCORE : IMMEASURABLE QUANTIFICATION". The QVscribe logo is visible in the top right corner.

## Logic Improvements

We have also improved the logic behind our analysis for incomplete sentences. In this update, your internal list and your imperative phrase list are both included while analyzing your requirement. This advancement will lower false positives and make incomplete sentences more accurate.

## Microsoft Word and Microsoft Excel Teams

Release 4.0 will give you the ability to enable/disable problem types for your QVscribe configuration.



And similar to our other integrations the QVscribe report will show N/A for disabled problem types.

## Analysis Breakdown

Quality Score	Percentage*	# of Occurrences
Superfluous Infinitives	20%	5
Immeasurable Quantification	20%	5
No Imperatives	16%	4
Non-specific Temporal Words	8%	2
Negative Imperatives	4%	1
Optional Escape Clauses	4%	1
Cross-Referencing Pronouns	4%	1
Multiple Imperatives	0%	0
Optional Open-Ended Clauses	N/A	N/A
Vague Words	N/A	N/A
Excessive Continuations	0%	0
No Directives	N/A	N/A

We have also improved the logic behind our analysis for incomplete sentences. In this update, your internal list and your imperative phrase list are both included while analyzing your requirement. This advancement will lower false positives and make incomplete sentences more accurate.

An added benefit of this integration is that QVscribe will now inherit your theme from your Windows settings for the dialogue boxes.

We improved feature parity between QVscribe for Word and Excel for a refined Excel user experience. Where appropriate, the user interface has been updated while considering that both Word and Excel systems have different workflows.

## Microsoft Edge & OpenJDK Support

QVscribe now supports Microsoft Edge: QVscribe is now fully supported in the Microsoft Edge browser in addition to Google Chrome for users of Jama, Polarion, and DOORS Next.

Support for OpenJDK java runtime engine: Some customers have expressed the need for an alternative to Oracle Java. To support this requirement, customers now have the option to choose between Open JDK (Ver 8.0.252.09, build - jdk8u292- b10) and Oracle Java as their runtime engine.